

EVlink Wallbox

In short



Product QR code
'FLASH ME'



EVlink Wallbox, a range made of Wallbox 'Standard' and Wallbox 'Plus'

Extensive choice

Wallbox 'Standard' and Wallbox 'Plus' are each available in 14 versions:

- Rated charging power: 3.7, 7.4, 11 or 22 kW
- T2 socket outlet (with or without shutter) or attached cable (with T1 or T2 connector)

Charging station QR Code

- To get the product datasheet or to join Customer Care Center with "mySchneider" app, flash the QR Code with your usual QR Code reader
- To access cloud-based EcoStruxure™ Facility Expert app maintenance organizer: charging station registration, maintenance reports, (see page 25)

Robustness

- Highly robust to mechanical impact: IK10
- Suitable for outdoor use: IP54
- Heavy duty T2 socket outlet with silver plated contacts avoiding overheating

Easy to use

- "Plug and charge"
- One-touch stop/restart
- Attached cable rolled up around the Wallbox
- 1 or 2 charging stations mounted on the same pole

Energy management options

Only one option to be selected at once, or none

- Delayed start to charge only in off-peak hours
- Temporary current limitation from 16 A (3.7 and 11 kW) to 10 A, or from 32 A (7.4 and 22 kW) to 16 A, to cut the risk of electric overload
- Permanently adjust the maximum charging current available for the vehicle, to avoid tripping (utility meter or incoming circuit-breaker) when the overall consumption of the home is close to the subscribed power

The first two options are activated by closing an external contact (off-peak switch, load-shedding device, etc) hardwired to the single digital input. The third option is only available in Wallbox Plus when using the TIC ("Télé-Information Client") interface of French utility meters (single-phase residential only with Linky and former electronics meters)

Protection against earth leakage current (Wallbox Plus only)

Wallbox Plus is fitted with a built-in protection against residual direct current (RDC-DD, as "Residual Direct Current Detecting Device"). This makes it possible to use an upstream type A protection against residual current (RCD) both in single-phase and three-phase, in accordance with the CENELEC HD 60364-7-722:2016 electrical installation standard.

Please note that despite the mandatory application of this new standard since February 2019, some countries may have not yet updated their national standard accordingly. National standards and codes prevail and the use of a RCD type A combined with a RDC-DD may be prohibited in three-phase.

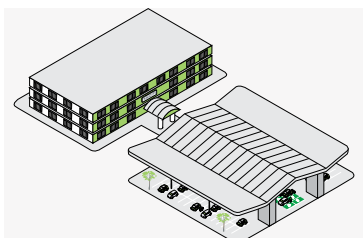
At home



At home — condominium



In private parking area

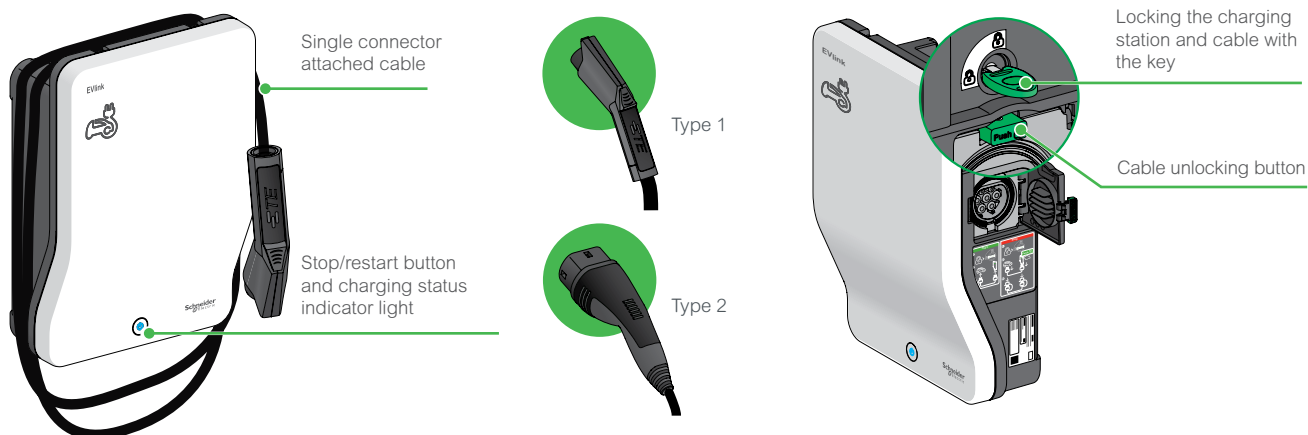


Application

EVlink Wallbox 'Standard' and EVlink Wallbox 'Plus'

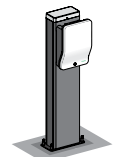
Wallbox Standard and Wallbox Plus are recommended for homes, as well as tougher environments (condominium, corporate park, hotel, etc.), because of their weatherproof and robust design.

Discovery



Charging station with attached cable

Charging station with socket outlet



1 or 2 Wallbox on optional pedestal mounting pole



Charging station unlocked

- Locking the station with the key
- Impossible to insert the plug
 - Impossible to extract the cable
 - Impossible to stop/start charging



Charging station locked

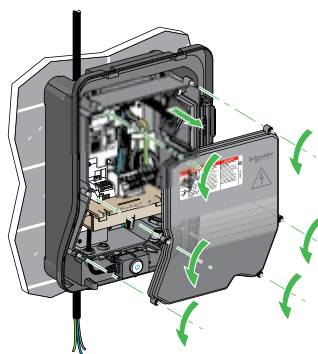
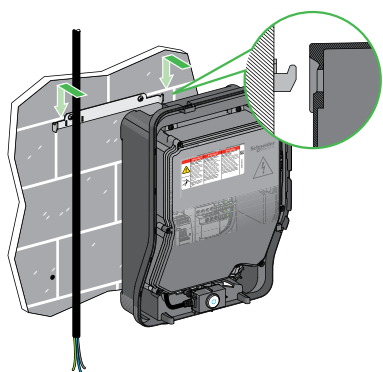
Easy to install

Installation by a single technician in less than 30 minutes;
no special tools required
Top, bottom or back side wiring
Immediate commissioning

What's inside an EVlink Wallbox



Scan or click on QR code



EVlink Wallbox

Characteristics



Z.E. READY*



> ROHS compliant
> Reach compliant
> EoLi: End Of Life Process
> Product Environmental Profile compliant

Certification

EVlink Wallbox has obtained the CB test certificate issued by the LCIE test laboratory, establishing compliance with the IEC 61851-1 and IEC 61851-22 standards.

(*) Granted to Wallbox Standard, planned for Wallbox Plus.

EVlink Wallbox 'Standard' and EVlink Wallbox 'Plus'

Power supply network

- 220 - 240 V single-phase – 50/60 Hz for 3.7 and 7.4 kW charging stations
- 380 - 415 V three-phase – 50/60 Hz for 11 and 22 kW charging stations
- Suitable earthing systems:
 - TT, TN-S, TN-C-S
 - IT (may require the addition of an isolating transformer to make it possible to charge certain vehicles)

Mechanical and environmental characteristics

- Ingress protection code: IP54
- Impact protection code: IK10
- Operating temperature: -30°C to +50°C
- Storage temperature: -40°C to +80°C
- Attached cable length: 4 m
- Energy management exclusive options: delayed charging start, temporary current limitation, real time maximum charging current control (Wallbox Plus only, combined with TIC interface of French utility meters)

Access control modes

- Free access
- Control by key lock, including charging cable locking

Warranty

- 24 months for the entire EVlink range

Standards

- IEC/EN 61851-1 ed 2.0
- IEC/EN 61851-22 ed 1.0
- IEC/EN 62196-1 ed 2.0
- IEC/EN 62196-2 ed 1.0.

Charging station references

➤ EVlink Wallbox



| Description | Socket outlet or connector type | Power (kW) Phases | References | |
|--|---------------------------------|----------------------|------------------|--------------|
| | | | Wallbox Standard | Wallbox Plus |
| With socket outlet on right side ⁽¹⁾ - Silver-plated contacts | | | | |
| T2 | | 3.7 (1P - 16 A) | EVH2S3P02K | EVH3S3P02K |
| | | 7.4 (1P - 32 A) | EVH2S7P02K | EVH3S7P02K |
| | | 11 (3P - 16 A) | EVH2S11P02K | EVH3S11P02K |
| | | 22 (3P - 32 A) | EVH2S22P02K | EVH3S22P02K |
| T2 with shutters | | 3.7 (1P - 16 A) | EVH2S3P04K | EVH3S3P04K |
| | | 7.4 (1P - 32 A) | EVH2S7P04K | EVH3S7P04K |
| | | 11 (3P - 16 A) | EVH2S11P04K | EVH3S11P04K |
| | | 22 (3P - 32 A) | EVH2S22P04K | EVH3S22P04K |
| With attached cable 4 m, on right side - Silver-plated contacts | | | | |
| T1 | | 3.7 (1P - 16 A) | EVH2S3P0AK | EVH3S3P0AK |
| | | 7.4 (1P - 32 A) | EVH2S7P0AK | EVH3S7P0AK |
| T2 | | 3.7 (1P - 16 A) | EVH2S3P0CK | EVH3S3P0CK |
| | | 7.4 (1P - 32 A) | EVH2S7P0CK | EVH3S7P0CK |
| | | 11 (3P - 16 A) | EVH2S11P0CK | EVH3S11P0CK |
| | | 22 (3P - 32 A) | EVH2S22P0CK | EVH3S22P0CK |

⁽¹⁾ Cable available as an accessory.

➤ Protections and options with Wallbox Standard

| Description | | | | | |
|--|-----------|---|---|---|---|
| Charging | | Single-phase | | Three-phase | |
| Rated Power - Current | | 3.7 kW - 16 A | 7.4 kW - 32 A | 11 kW - 16 A | 22 kW - 32 A |
| Protection | | | | | |
| Circuit breaker (overcurrent) ⁽¹⁾ | | 20 A Curve C | 40 A Curve C | 20 A Curve C | 40 A Curve C |
| RCD (residual current) ⁽¹⁾ | | 30 mA B Type for EV ⁽²⁾ : A9Z51225 | 30 mA B Type for EV ⁽²⁾ : A9Z51240 | 30 mA B Type for EV: A9Z51425 | 30 mA B Type for EV: A9Z51440 |
| | | 30 mA B-SI Type ⁽²⁾ : A9Z61225 | 30 mA B-SI Type ⁽²⁾ : A9Z61240 | 30 mA B-SI Type: A9Z61425 | 30 mA B-SI Type: A9Z61440 |
| Under voltage tripping auxiliary | with iC60 | A9A26969 (optional) | A9A26969 ⁽³⁾ | A9A26969 ⁽³⁾ | A9A26969 ⁽³⁾ |
| | with DT40 | A9N26969 (optional) | A9N26969 ⁽³⁾ | A9N26969 ⁽³⁾ | A9N26969 ⁽³⁾ |
| Delayed start | | | | | |
| Relay | | With normally open contact | | | |
| Temporary current limitation | | | | | |
| Relay | | With normally open contact | | | |

➤ Protections and options with Wallbox Plus

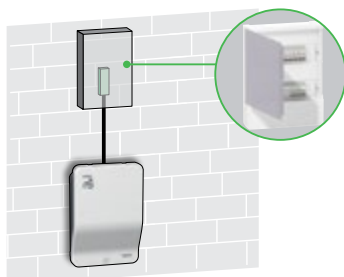
| Description | | | | | |
|--|-----------|--------------------------------|----------------------------|--------------------------------|----------------------------|
| Charging | | Single-phase | | Three-phase | |
| Rated Power - Current | | 3.7 kW - 16 A | 7.4 kW - 32 A | 11 kW - 16 A | 22 kW - 32 A |
| Protection | | | | | |
| Circuit breaker (overcurrent) ⁽¹⁾ | | 20 A Curve C | 40 A Curve C | 20 A Curve C | 40 A Curve C |
| RCD (residual current) ⁽¹⁾ | | 30 mA A-SI Type ⁽²⁾ | | 30 mA A-SI Type ⁽²⁾ | |
| Under voltage tripping auxiliary | with iC60 | A9A26969 ⁽⁴⁾ | A9A26969 ⁽³⁾⁽⁴⁾ | A9A26969 ⁽³⁾⁽⁴⁾ | A9A26969 ⁽³⁾⁽⁴⁾ |
| | with DT40 | A9N26969 ⁽⁴⁾ | A9N26969 ⁽³⁾⁽⁴⁾ | A9N26969 ⁽³⁾⁽⁴⁾ | A9N26969 ⁽³⁾⁽⁴⁾ |
| Delayed start | | | | | |
| Relay | | With normally open contact | | | |
| Temporary current limitation | | | | | |
| Relay | | With normally open contact | | | |

⁽¹⁾ References to be defined and local availability to be checked by Schneider Electric front offices.

⁽²⁾ In accordance with the electrical installation standard HD 60364-7-722:2016. Refer to local regulation.

⁽³⁾ Necessary to meet EV Ready requirements.

⁽⁴⁾ Mandatory for safety in case of charging station damage further to a short-circuit created by the vehicle.



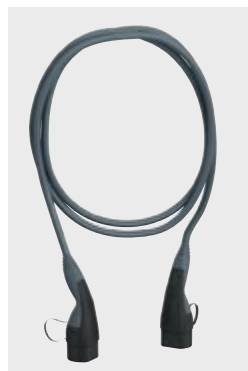
The charging station operates autonomously.
It has a dedicated protective device.

- Installation: by an electrician
- Location: residential, private usage

EVlink Wallbox

Accessory references

EVlink Cable



To connect the car to the charging station. Available with a T1 or T2 connector.

Please refer to page 46

AC charging station testing tool



Enables an operating check in the field of the charging station and charging cable.
Reference: **EVA1SADS**

Pedestal mounting pole



Floor standing:
• for 1 Wallbox,
Reference **EVP2PBSSG1**
• for 2 Wallbox,
Reference **EVP2PBSSG2**
Available 4th quarter of 2020

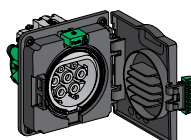
Spare part references

Front panel



Reference
EVP1HCWN

Socket outlet



References

| | |
|------------------|------------------|
| T2S single-phase | EVP1HSM41 |
| T2 single-phase | EVP1HSM21 |
| T2S three-phase | EVP1HSM43 |
| T2 three-phase | EVP1HSM23 |

Key lock



| References |
|--|
| Key lock Random ⁽¹⁾ EVP1HLSR |
| Key lock Single ⁽¹⁾ EVP1HLSS |

⁽¹⁾ Example:

- If you order one EVP1HLSR: you will receive 1 lock + 2 keys with same code.
- If you order one EVP1HLSS: you will receive 10 locks + 20 keys with same code for all keys.

Attached cable

References

T1 charging connector



| | |
|-------------------|---------------------|
| 16 A single-phase | EVP2CNS161A4 |
| 32 A single-phase | EVP2CNS321A4 |

T2 charging connector



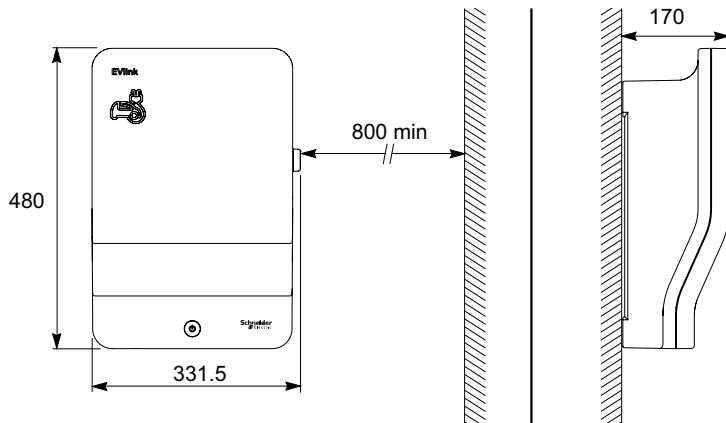
| | |
|-------------------|---------------------|
| 16 A single-phase | EVP2CNS161C4 |
| 32 A single-phase | EVP2CNS321C4 |



| | |
|------------------|---------------------|
| 16 A three-phase | EVP2CNS163C4 |
| 32 A three-phase | EVP2CNS323C4 |

Practical information

➤ Dimensions (mm)



5.6 kg (Wallbox Standard)
6.3 kg (Wallbox Plus)



7.5 kg (Wallbox Standard with attached cable)
7.9 kg (Wallbox Plus with attached cable)

EcoStruxure™ Facility Expert

Register your charging station and improve your maintenance efficiency now with EcoStruxure™ Facility Expert.

- EcoStruxure™ Facility Expert is a simple, cloud-based tool that helps you organize maintenance records, follow-up on preventive maintenance, access log histories, create reports, and integrate remote alarming from your equipment.
- Let EcoStruxure™ Facility Expert help you optimize your maintenance activities. Download it for free on your PC or for your smart device at the Apple or Google Play store.
- You are ready to flash the product QR code with the EcoStruxure™ Facility Expert reader.



Additional information for Wallbox Standard

| Technical document | Language | References |
|----------------------------|----------------------------|-----------------|
| With socket outlet | | |
| Quick start guide | EN/ES/FR/DE ⁽¹⁾ | NHA31789 |
| | IT/NL/PL/PT | NHA31790 |
| Instruction sheet | EN/ES/FR/DE ⁽¹⁾ | NHA31778 |
| | IT/NL/PL/PT | NHA31779 |
| | NO/SV/FI | QGH34400 |
| With attached cable | | |
| Quick start guide | EN/ES/FR/DE ⁽¹⁾ | NHA31783 |
| | IT/NL/PL/PT | NHA31784 |
| Instruction sheet | EN/ES/FR/DE ⁽¹⁾ | NHA31787 |
| | IT/NL/PL/PT | NHA31788 |
| | NO/SV/FI | QGH34396 |

Additional information for Wallbox Plus

| Technical document | Language | References |
|----------------------------|----------------------------|-----------------|
| With socket outlet | | |
| Instruction sheet | EN/FR/DE/NO ⁽¹⁾ | PHA92084 |
| | SV/ES/NL/IT | PHA92086 |
| With attached cable | | |
| Instruction sheet | EN/FR/DE/NO ⁽¹⁾ | PHA92085 |
| | SV/ES/NL/IT | PHA92087 |

⁽¹⁾ Delivered with the Wallbox.

To download the above documents, do a search by reference on www.schneider-electric.com